

## Innen- und Aussenverkleidung



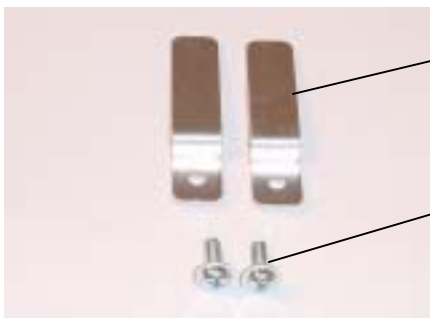
10.100.108.00 x1



80.802.110.00 x1



10.001.271.00 x1



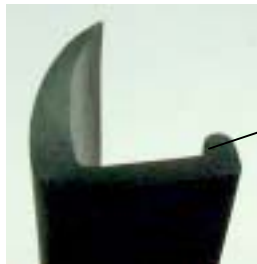
10.002.111.00 x2

85.323.050.16 x2

## Innen- und Aussenverkleidung



10.001.112.00 | x1



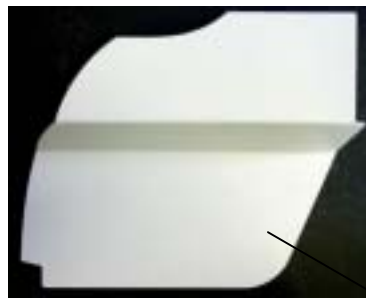
10.010.030.00 | x1



10.001.386.01 | x1



10.001.253.00 | x1



10.001.254.00 | x1



85.323.050.16 | x13



10.001.239.00 | x10